

# HeartLINE

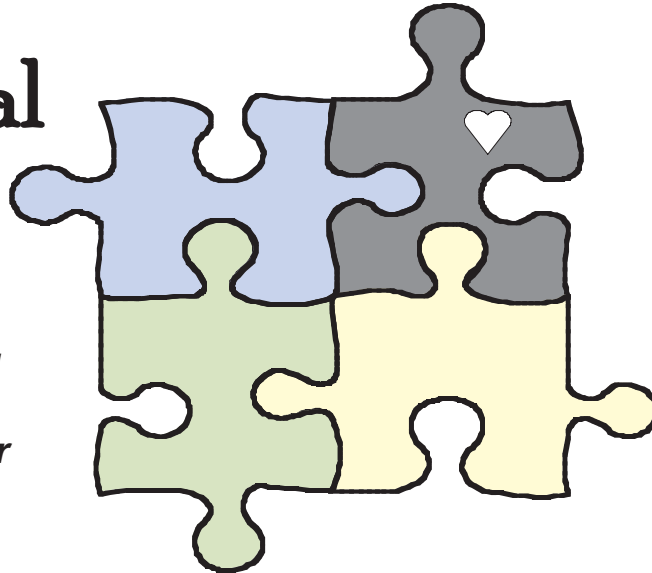
Connecting with our Volunteers



Where the Heart Is...  
Home Health and Hospice Care

You're an  
**Essential  
Piece**

*We invite you  
to  
come together  
for fun  
and  
recognition!*

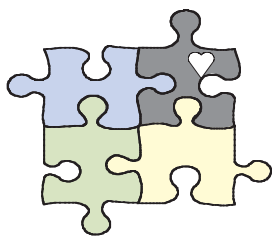


at

**ADORAY's  
Volunteer Appreciation Dinner**

Monday, April 18  
5:30 - Social Hour  
6:30 - Dinner

Ready Randy's  
1490 131st Street  
New Richmond



*Watch  
for your  
invitation  
in the mail.*

**RSVP to Leann Huston  
at 715-684-5020  
by April 11.**

March 2011

## Happy Birthday!

- 1 Judith Hansen Jorgenson  
Melissa Rauch-Borgerding
- 2 Mary Onkka
- 4 Donna Mae Stohlmann
- 5 Debra Anderson  
Lydia Chatt  
Gina Thompson  
Donna Wilcoxson
- 6 Amy Olson
- 7 Mary Jo Bloom  
Mary Radtke
- 8 Deb Quist
- 9 Margaret Blum
- 10 Angela Urhammer
- 13 Leann Huston
- 14 Debbie Milligan
- 15 Marlene Wahl
- 20 Janice Annis
- 25 Pearl Kittleson  
Jodi Main
- 26 Nancy Spott
- 29 Jean Clark  
Sandy Decoux
- 31 Joleen Larson



## Thanks!

Mzia Chatara, LISW, ADORAY Hospice Social Worker

I want to take this opportunity to acknowledge Debbie Milligan and the amazing job she does as ADORAY Volunteer Coordinator. As most of you probably know I covered for Debbie for the month of February. It has been an eye opening experience!! I have been aware that Debbie has numerous responsibilities, but I have really never experienced what that entails over a period of time. Now that I have had that opportunity, I am ever so grateful for all that she does.

I also have to say, "Thank you! Thank you! Thank you!" to all our volunteers. It seems as if there is no request too big or too small that you are not willing to meet. No matter the time of day, the request, the circumstances, you always say yes. You make such a difference in the lives of our patients and families. We hear over and over again how much they appreciate the kindness, support and respite you provide.

Many, many thanks to all of you!

Mzia

*A generous heart, kind speech, and a life of service and compassion are the things which renew humanity.*

BUDDHA

## April 2011 Happy Birthday!

- 2 Margaret Bredahl  
Diane Kircher  
Stephanie Larson  
Lynda Maki
- 3 Mary Moldenhauer
- 5 Gloria Christopherson
- 6 Pat Cederholm
- 10 Maureen McElrath
- 11 Shelley Borgeson  
Helen Rosen
- 12 Clarice Baumgartner
- 13 Bob Nelson  
Bob Eberspacher
- 14 Betty Merriman  
LuVerne Wobig
- 17 Kathy Svoboda
- 19 Spencer Porter
- 20 Melinda Mahoney
- 22 Helen Donahue  
Barb Larson
- 25 Diane Jasperson  
Dave Urban
- 28 Carole Englund
- 29 Tom Hess
- 30 Dorothy Armstrong



## ASK ADORAY - Spot Light on Patient Services

**Dear ADORAY:** I heard that the four hospitals in St. Croix County used to each have a hospice. Why did they

close and how did ADORAY get started?

**ADORAY responds:** Hudson Hospital had a hospice program in the early 1990's. River Falls had a community, volunteer-based hospice program at the same time. Baldwin and New Richmond had no hospice services available. In order to be more cost-effective and to better serve all residents in West-Central Wisconsin, the hospitals decided to

form the not-for-profit corporation, St. Croix Valley Shared Services, Inc. which began in 1995 under the name of Heartland Home Care Network. In 2006, we changed our name to ADORAY Home Health and Hospice. ADORAY is still proudly owned by Baldwin Area Medical Center, Hudson Hospital & Clinics, River Falls Area Hospital, and Westfields Hospital, New Richmond.

We have served nearly 6000 patients.

## **Baldwin Store News – from Jennifer Soergel, Manager’s Assistant**

The store receives beautiful donations and thanks to our many volunteers, we get the merchandise out on the floor as quickly as we can. Our customers search for items they need and find a lot they didn't know they needed!

At times we are asked what we do with the items that do not sell. Here is just one of the ways the donations are put to good use:

In 1985, Mary Joe Copeland founded Sharing and Caring Hands located in St. Paul, MN. It is a compassionate response to the needs of the poor. The help this facility offers includes providing meals, clothing, showers, shelter, transportation, medical assistance, dental care and other miscellaneous needs. Sharing and Caring Hands is an extension of the community and is committed to making a difference in the lives of others. Roughly 20,000 people receive help each month.

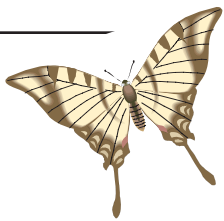
We currently have a team of volunteers that take turns loading up bags at the store and hauling them to St. Paul to be distributed at Caring and Sharing Hands. During one visit Dan Donahue and Bill Driscoll were given a tour and met Mary Jo! They said she runs a tight ship where



Baldwin Treasures volunteers, Dan Donahue and Bill Driscoll, received a tour of Sharing and Caring Hands, where they met founder Mary Joe Copeland.

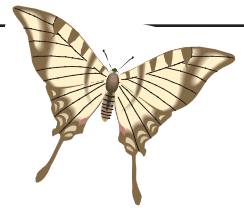
everyone is given a responsibility and takes pride in their surroundings. The compassion and pride they saw on the many faces of those receiving and giving help was amazing.

We are always looking for extra drivers to help deliver items to Sharing and Caring Hands. If you are interested, please contact Debbie Milligan at 715-684-5020.



*What you give of yourself  
is priceless.*

Opray Winfrey



## **River Falls Store News – from Bonnie Blue, Manager**

On March 15th we will begin our 8th year operating Treasures from the Heart in River Falls. What a remarkable journey the store has been for me, past and current staff, and hundreds of volunteers. Congratulations and Happy Anniversary to all of us!

We recently celebrated our anniversary with the community at our annual spring sale event on Sunday, February 13. The sale always brings us an extra day of revenue and some extra space to begin filling in with spring items. Even though the snow is here to stay for a bit, the flowers will be blooming soon at Treasures. Transition to spring happens slowly both outside and inside the store. Watch us change in the coming months.

We are happy to report that volunteer Mary Moldenhauer is on the speedy road to recovery. She

hopes to be back volunteering at the store this summer.

Many of you have not met one of our newer volunteers, Carol England. Carol works as cashier on Wednesdays and Fridays and has slowly been taking over our jewelry department as Pat Cedarholm prepares for a move. The transition has gone smoothly and Pat has helped Carol to find talents she never knew she had! She is designing lovely displays and the jewelry is selling as fast as ever. Our thanks to Pat for her training and expertise and Carol for her dedication and enthusiasm which resulted in a smooth transition.

This is our slowest time of year for donations. As you get into those spring clean out projects, please bring in your extras and encourage your friends and neighbors to support us and our ADORAY mission. Did I just hear a robin??



Please follow **Treasures from the Heart - Baldwin and River Falls** and **ADORAY Home Health and Hospice**.

# TREASURES from the HEART

Great used goods  at pennywise prices

## **Baldwin**

*Store hours:*

Tuesday	9 - 5
Wednesday	9 - 5
Thursday	9 - 5
Friday	9 - 5
Saturday	9 - 5

## **River Falls**

*Store hours:*

Tuesday	9 - 7
Wednesday	9 - 7
Thursday	9 - 7
Friday	9 - 5
Saturday	9 - 5

from  
*Debbie's desk*

## Hospice Volunteers

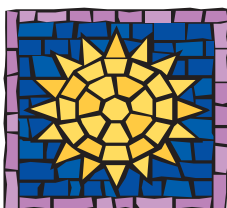
**Hospice Volunteer Meeting, Tuesday, March 29, 10 am.**

We will watch a short video presentation on working with Alzheimers patients. We will also discuss a new volunteer opportunity we would like to implement called the "Tuck-In" program.

## **MANDATORY**

Inservice for all Hospice Volunteers. Attend one of the following meetings at the ADORAY office:  
**Tuesday, May 3 at 10am or Tuesday, May 10 at 7pm**

A Note from Dorothy Armstrong, ADORAY Bereavement Coordinator



The annual **ADORAY Hospice Memorial Service** will again be in May. Details will be announced in the next HeartLINE. You are all invited to remember a loved one with us or attend in remembrance of a hospice patient.

Where the Heart Is...  
Home Health and Hospice Care  
A program of St. Croix Valley Shared Services, Inc.  
2231 Highway 12, Suite 201  
Baldwin, WI 54002-9248

